

ROUGHSAWN CEDAR DUAL
SUMMARY INSTALLATION GUIDE



CAUTION: ALWAYS INSTALL PRODUCT FROM LEFT TO RIGHT AND REMEMBER THAT POLYMER UNDERGOES EXPANSION/CONTRACTION DUE TO TEMPERATURE VARIATIONS. FOR A BETTER LOOK WE RECOMMEND TO INSTALL PRODUCT ON FLAT SURFACES (EX: PLYWOOD PANELS OR OSB PANELS). IF SECTIONS ARE INSTALLED ON A WALL WITH FURRINGS, FURRING STRIPS MUST BE INSTALLED OBLIQUELY AND SPACED BY 8”(20,32CM).

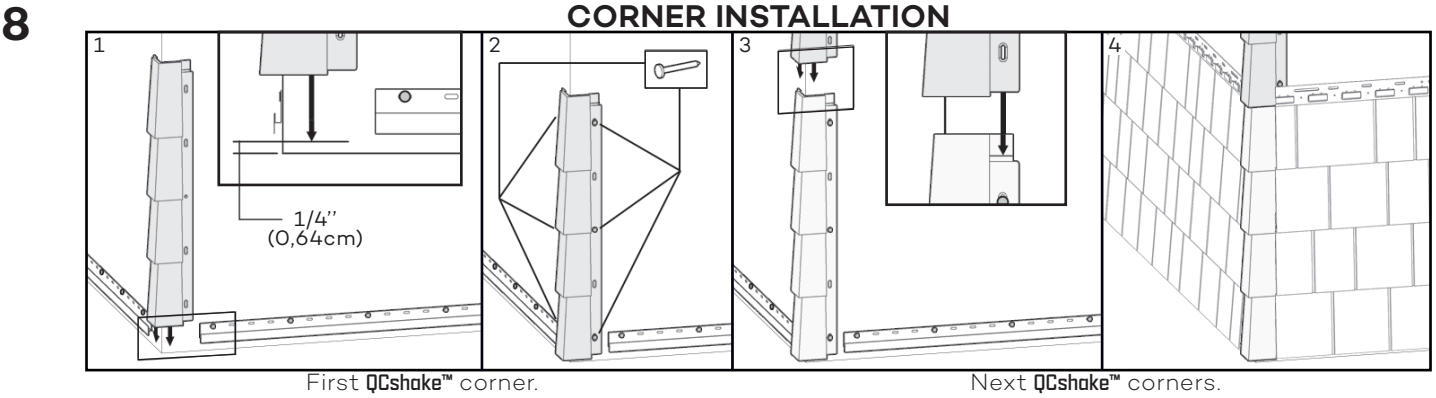
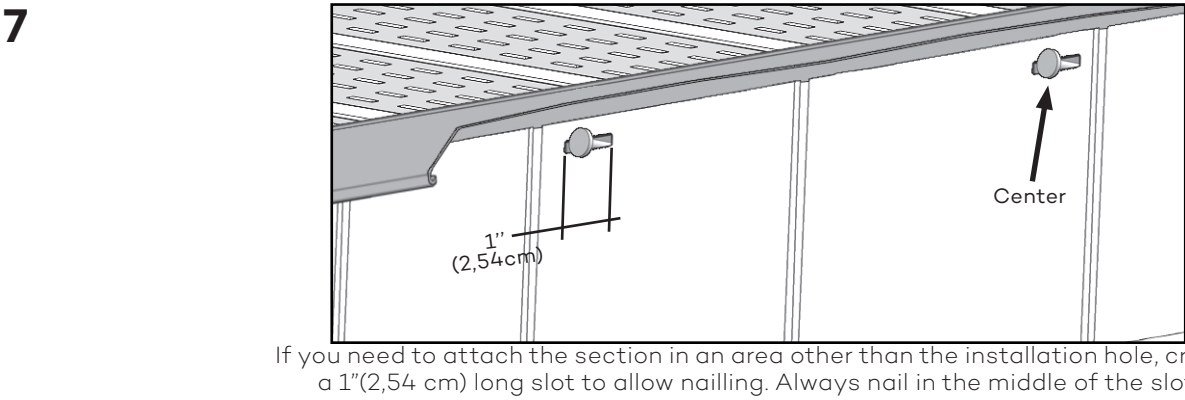
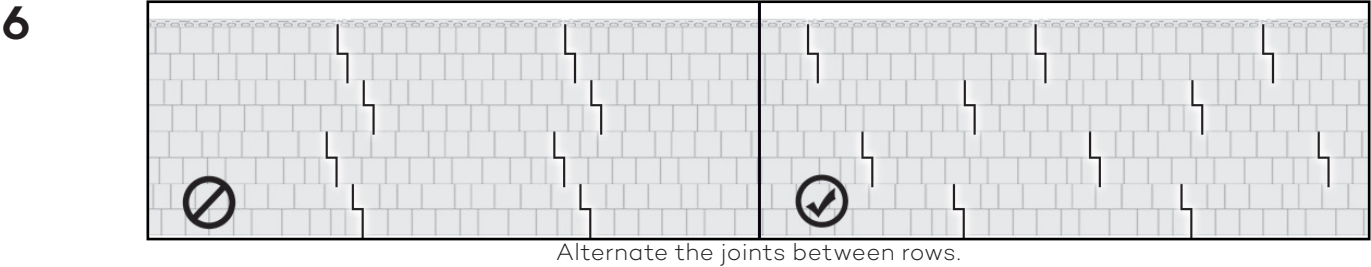
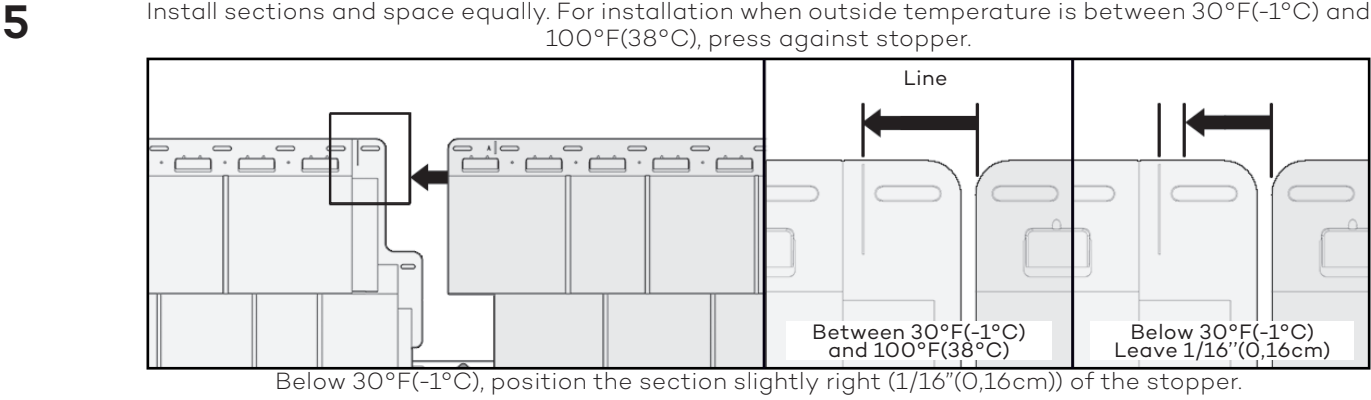
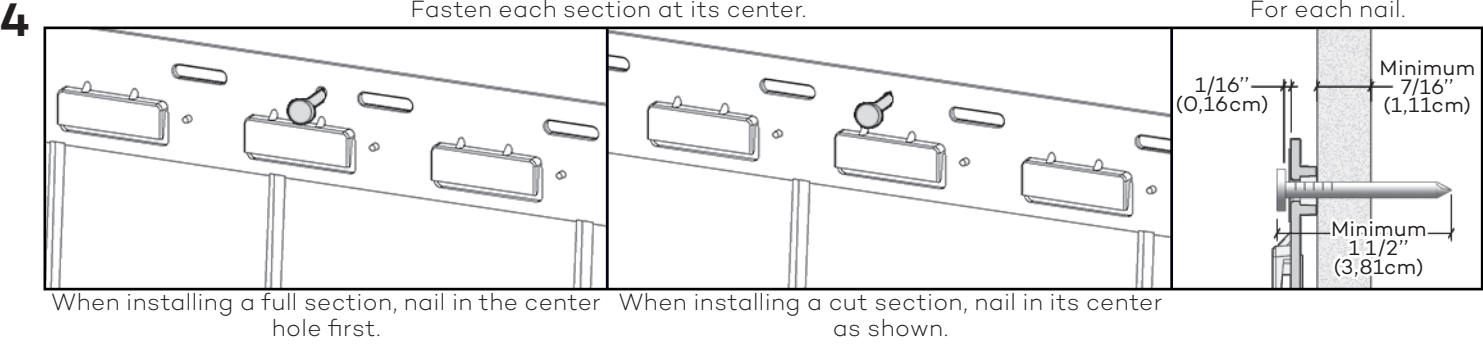
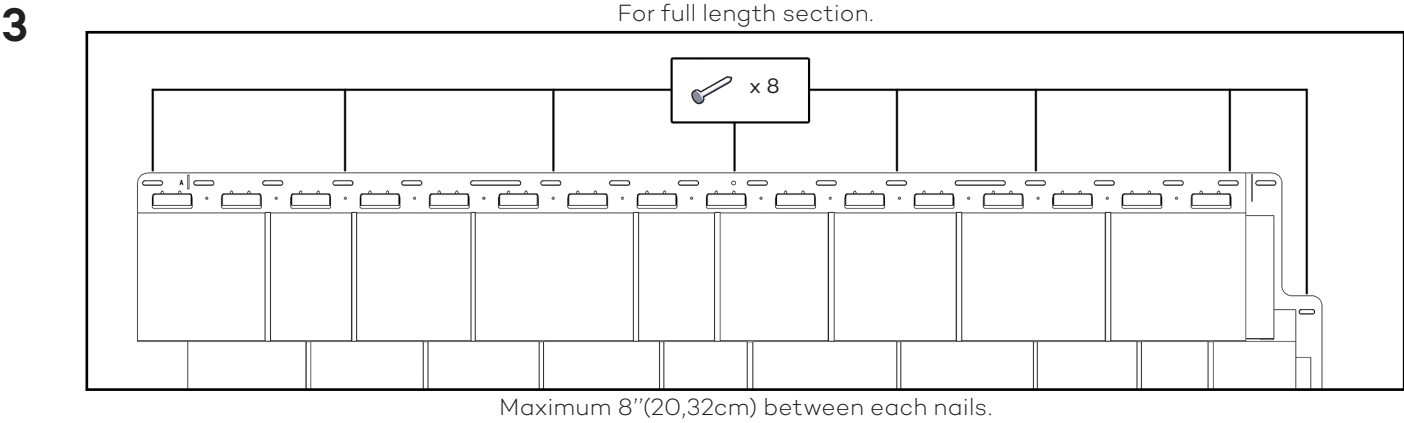
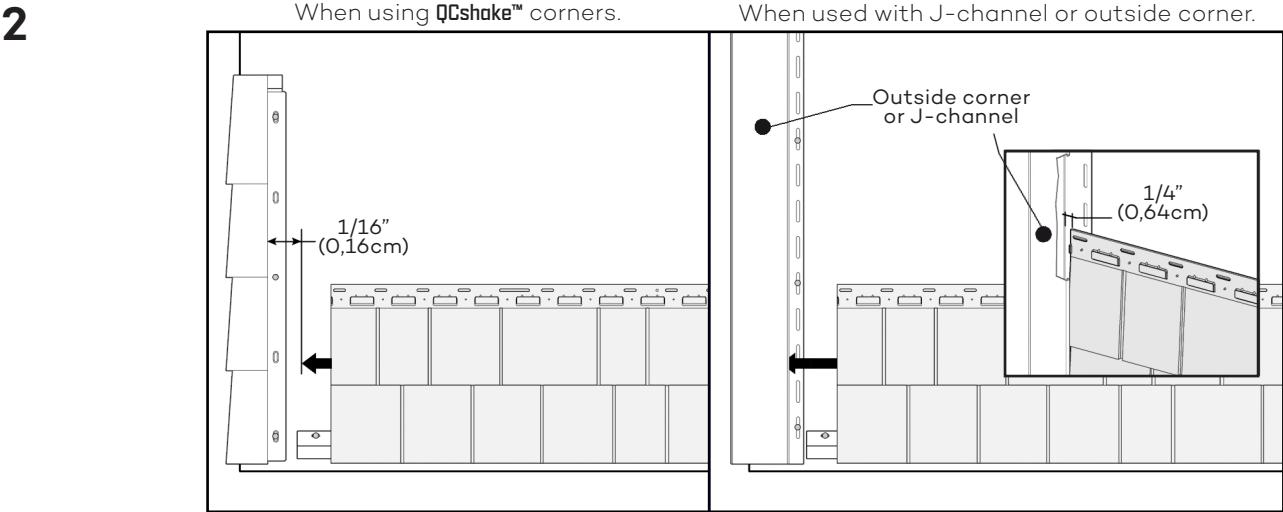
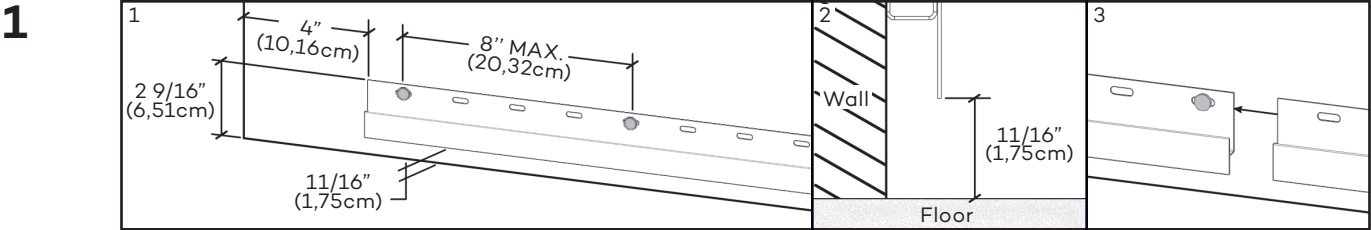
FRANÇAIS
AU VERSO

ESPAÑOL

PORTUGUÊS

РУССКИЙ

POLSKIE



See [QCshake.com](https://www.qcshake.com) for the complete installation guide.

