

CAPE COD PERFECTION  
SUMMARY INSTALLATION GUIDE



CAUTION: ALWAYS INSTALL PRODUCT FROM LEFT TO RIGHT AND REMEMBER THAT POLYMER UNDERGOES EXPANSION/CONTRACTION DUE TO TEMPERATURE VARIATIONS. FOR A BETTER LOOK WE RECOMMAND TO INSTALL PRODUCT ON FLAT SURFACES (EX: PLYWOOD PANELS OR OSB PANELS). IF SECTIONS ARE INSTALLED ON A WALL WITH FURRINGS, FURRING STRIPS MUST BE INSTALLED OBLIQUELY AND SPACED BY 8”(20,32CM).

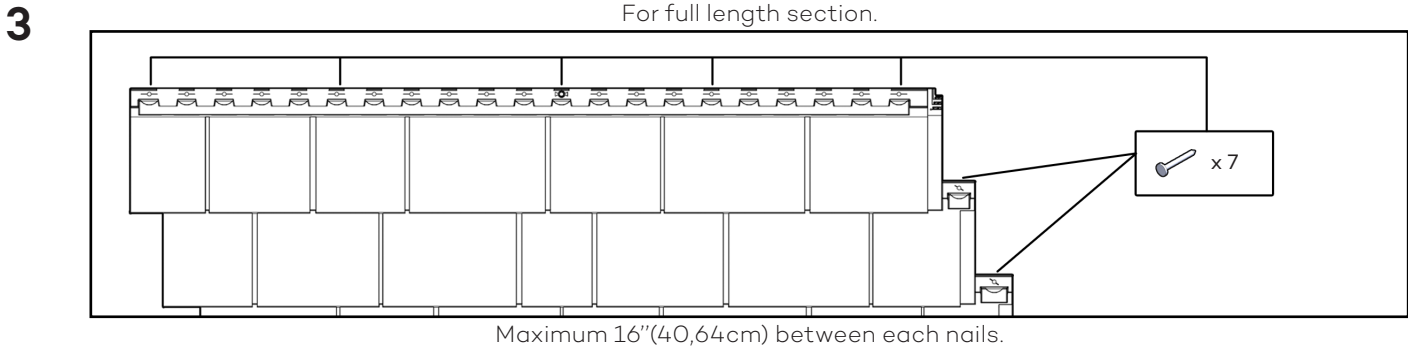
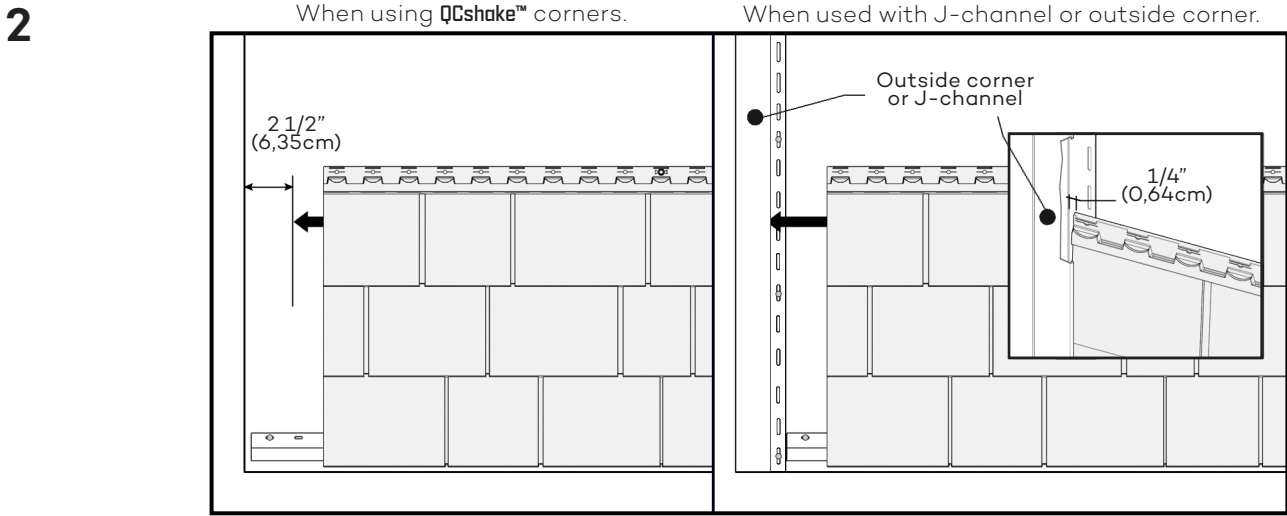
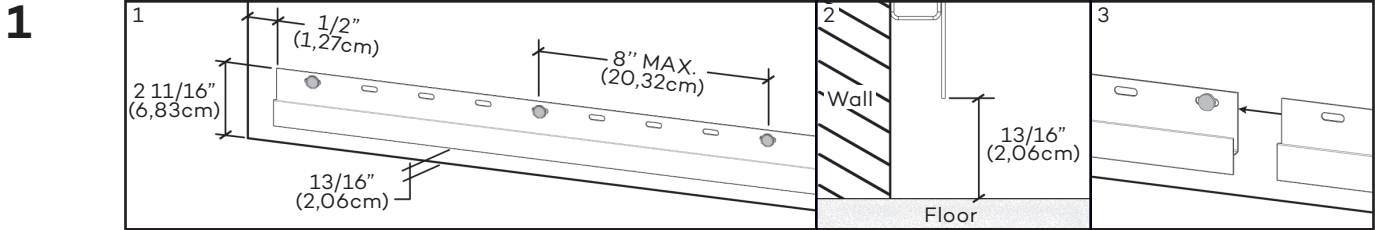
FRANÇAIS  
AU VERSO

ESPAÑOL

PORTUGUÊS

РУССКИЙ

POLSKIE



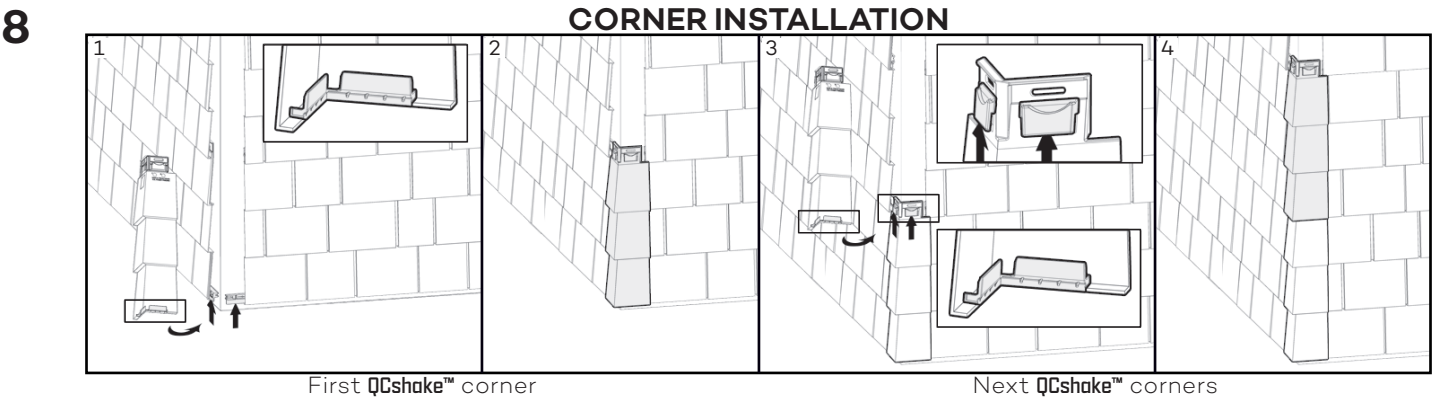
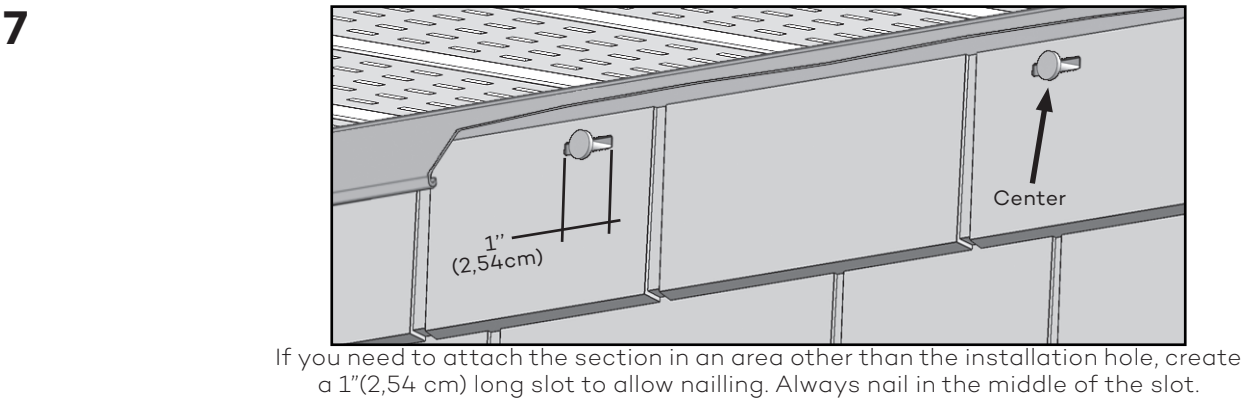
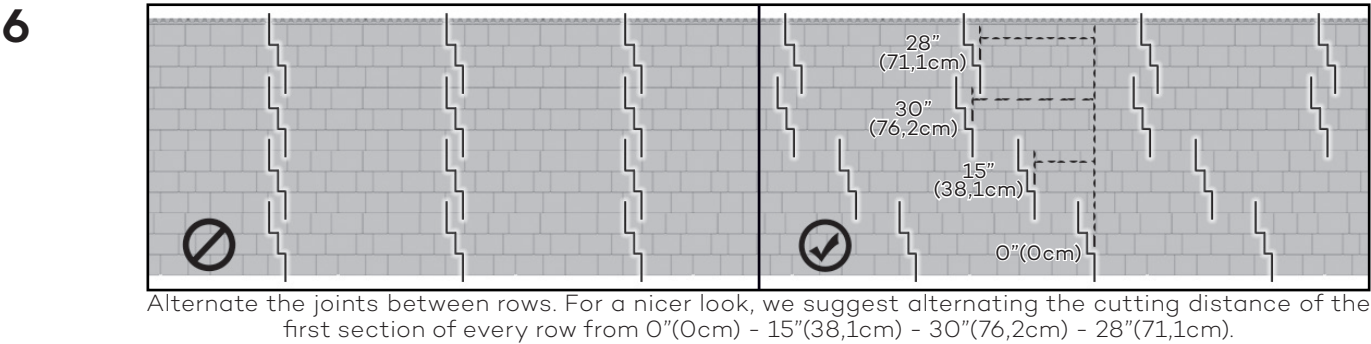
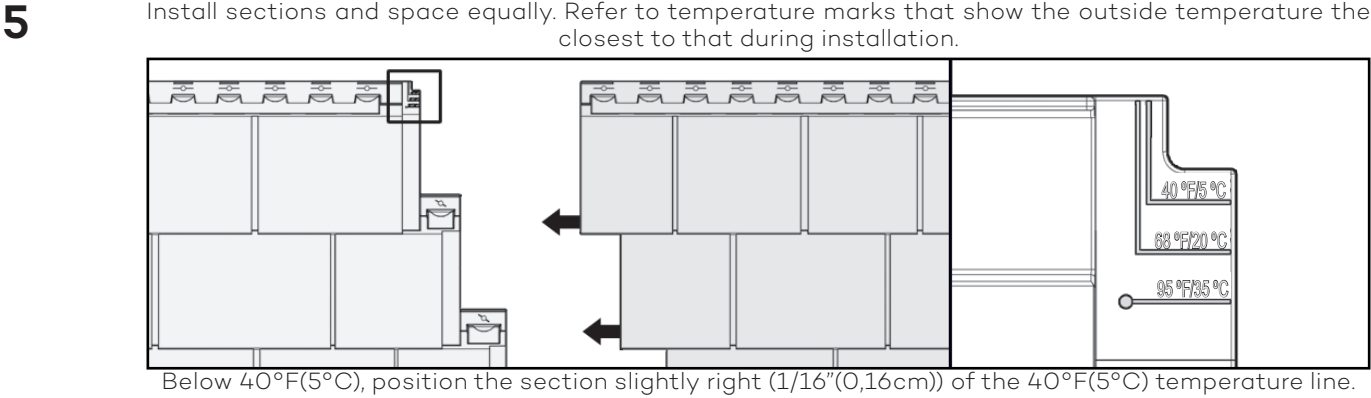
When installing a full section, nail in the center hole first.

When installing a cut section, nail in its center.

For each nail, leave a gap between nail head and section. When using a roofing nailer, adjust its tip at the highest position and the air pressure according to the substrate in order to leave the required gap.

\* Roofing nailer as Bostitch RN46 and Hitachi NV45.

**Note:** For use in Miami-Dade and Florida High Velocity Hurricane Zones, please refer to installation instructions on Miami-Dade Approved Product Listing, available on Technical Resources page of [QCshake.com](https://www.qcshake.com).



See [QCshake.com](https://www.qcshake.com) for the complete installation guide.

