

CAUTION: ALWAYS INSTALL PRODUCT FROM LEFT TO RIGHT AND REMEMBER THAT POLYMER UNDERGOES EXPANSION/CONTRACTION DUE TO TEMPERATURE VARIATIONS. FOR A BETTER LOOK WE RECOMMAND TO INSTALL PRODUCT ON FLAT SURFACES (EX: PLYWOOD PANELS OR OSB PANELS). IF SECTIONS ARE INSTALLED ON A WALL WITH FURRINGS, FURRING STRIPS MUST BE INSTALLED OBLIQUELY AND SPACED BY 8”(20,32CM).

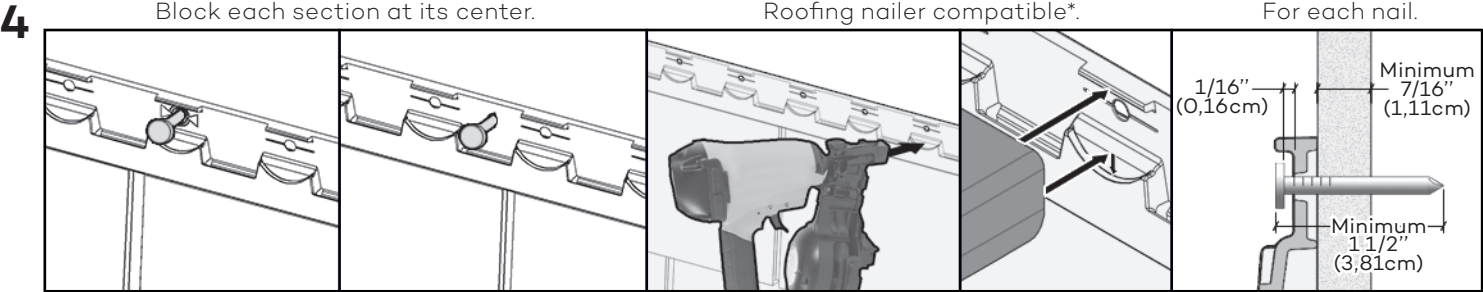
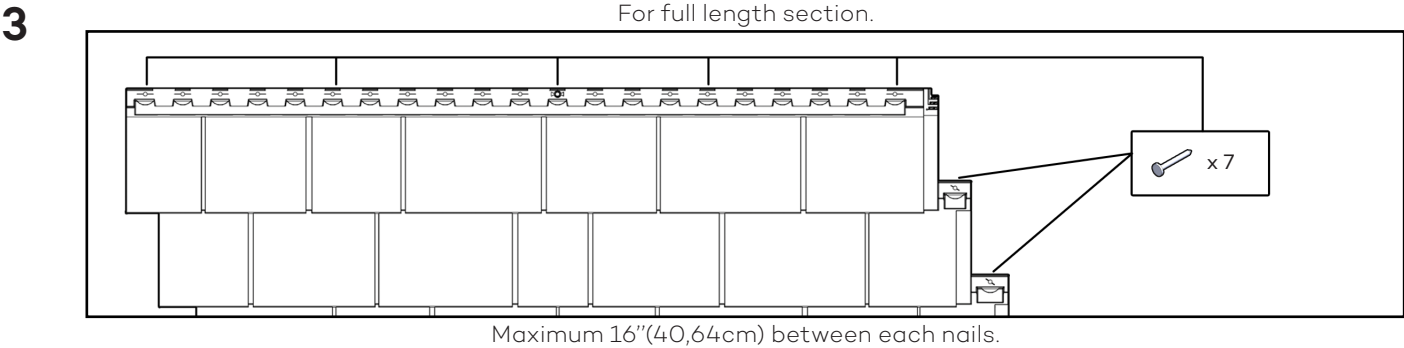
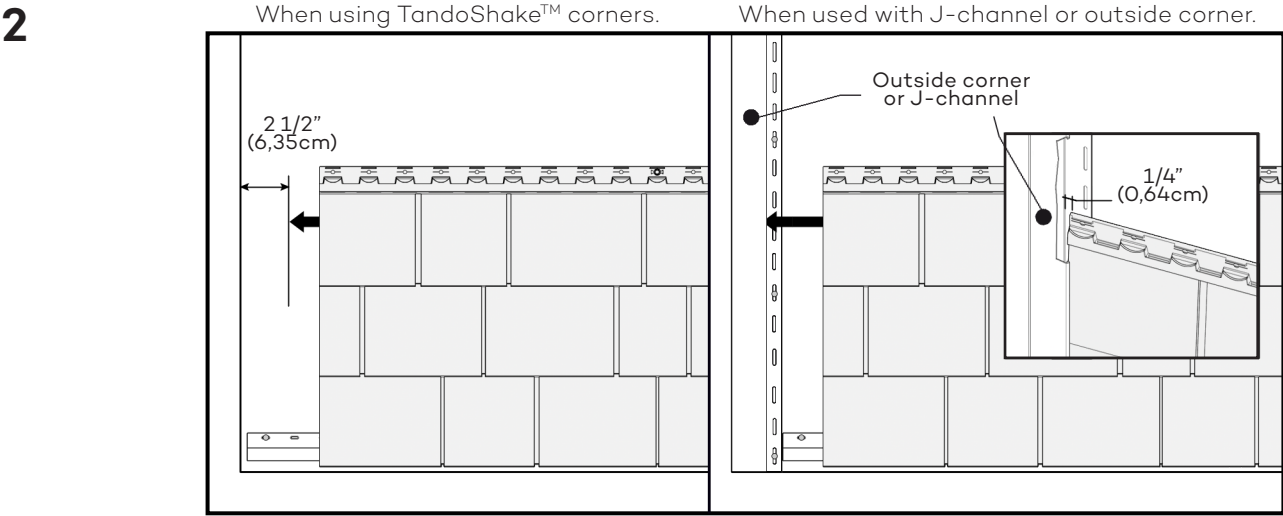
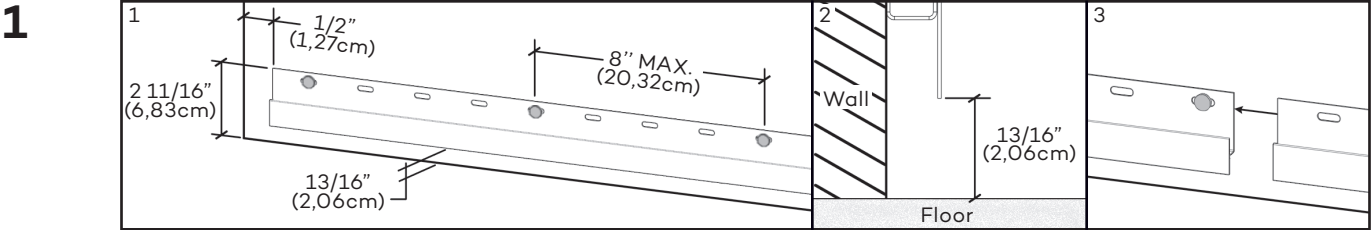
FRANÇAIS
AU VERSO

ESPAÑOL

PORTUGUÊS

РУССКИЙ

POLSKIE

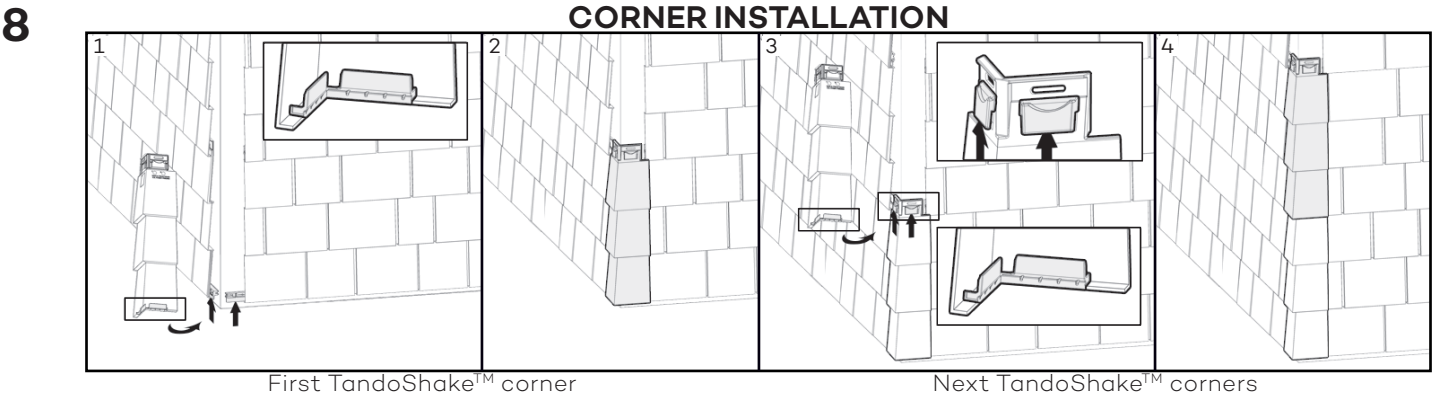
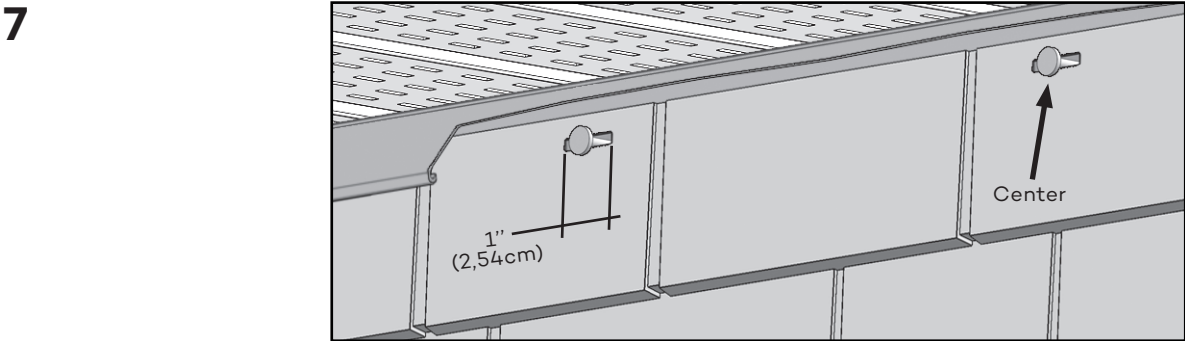
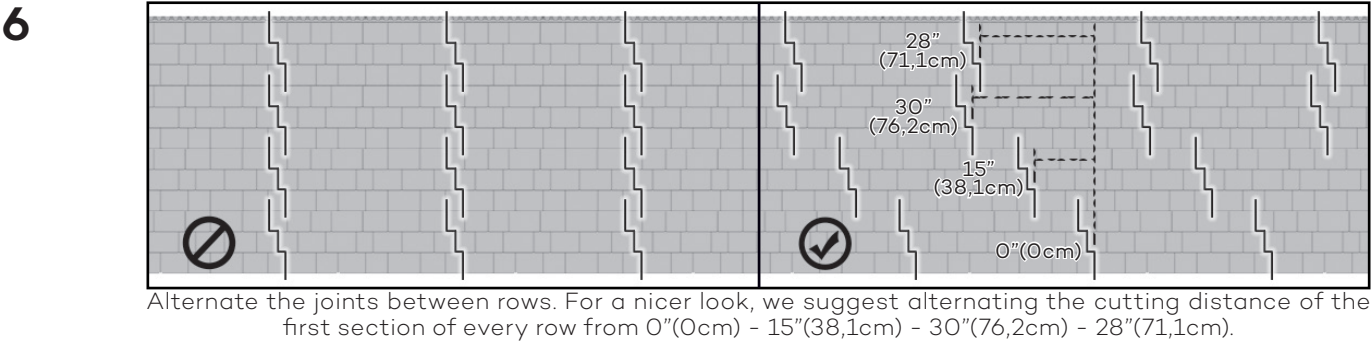
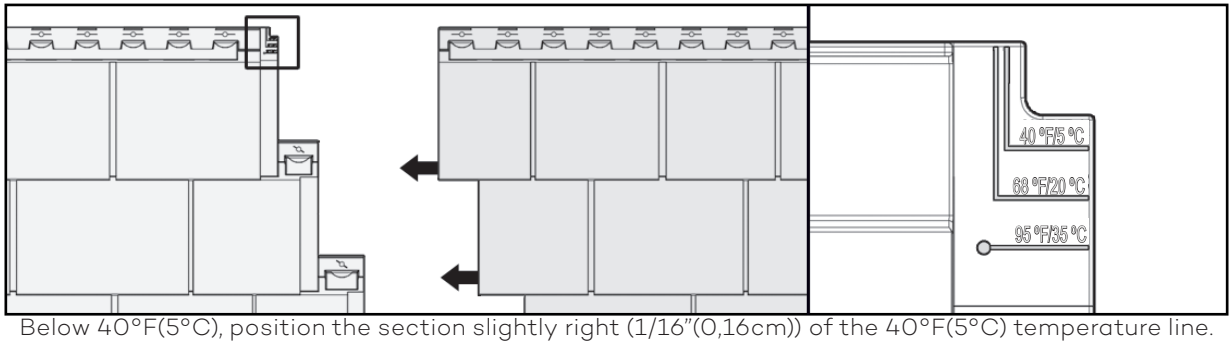


When installing a full section, nail in the center hole first. When installing a cut section, nail in its center. For each nail, leave a gap between nail head and section. When using a roofing nailer, adjust its tip at the highest position and the air pressure according to the substrate in order to leave the required gap.

* Roofing nailer as Bostitch RN46 and Hitachi NV45.

Note: For use in Miami-Dade and Florida High Velocity Hurricane Zones, please refer to installation instructions on Miami-Dade Approved Product Listing, available on our Tando website Resources page.

5 Install sections and space equally. Refer to temperature marks that show the outside temperature the closest to that during installation.



See www.tandobp.com for the complete installation guide.

