

CAPE COD PERFECTION  
SUMMARY INSTALLATION GUIDE



CAUTION: ALWAYS INSTALL PRODUCT FROM LEFT TO RIGHT AND REMEMBER THAT POLYMER UNDERGOES EXPANSION/CONTRACTION DUE TO TEMPERATURE VARIATIONS. FOR A BETTER LOOK WE RECOMMAND TO INSTALL PRODUCT ON FLAT SURFACES (EX: PLYWOOD PANELS OR OSB PANELS). IF SECTIONS ARE INSTALLED ON A WALL WITH FURRINGS, FURRING STRIPS MUST BE INSTALLED OBLIQUELY AND SPACED BY 8”(20,32CM).

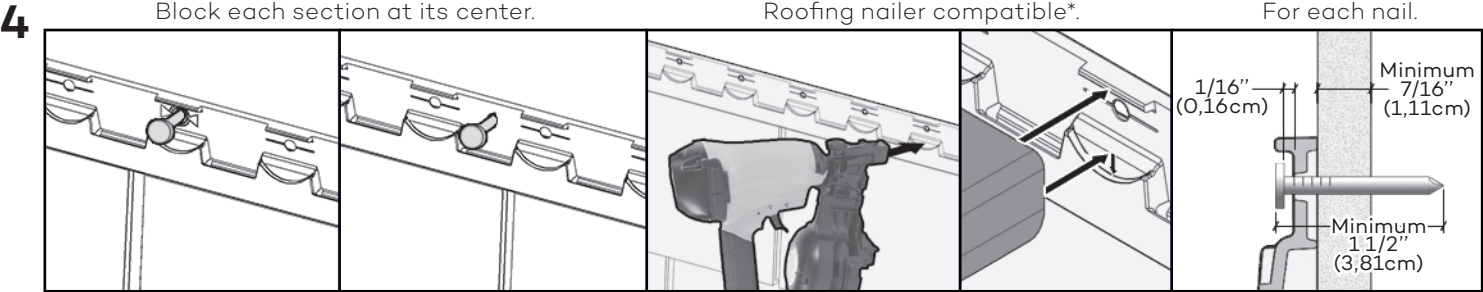
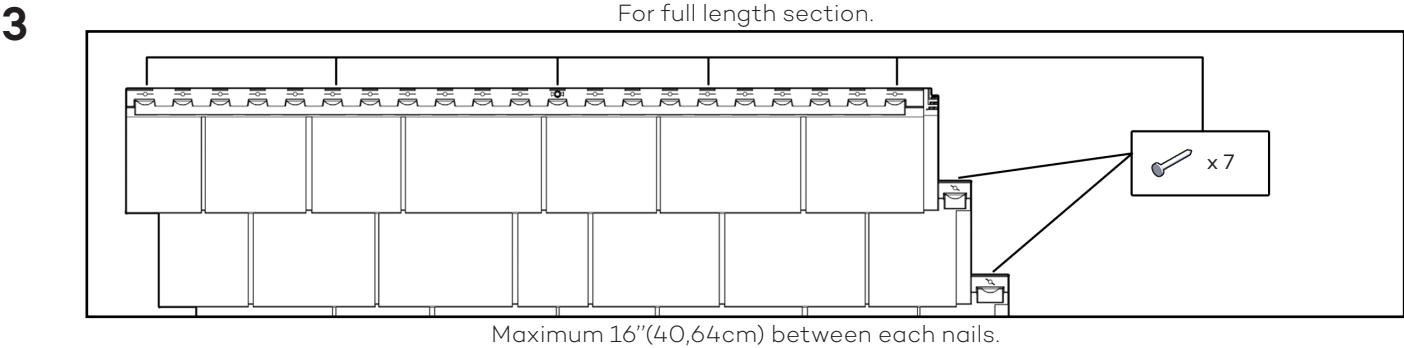
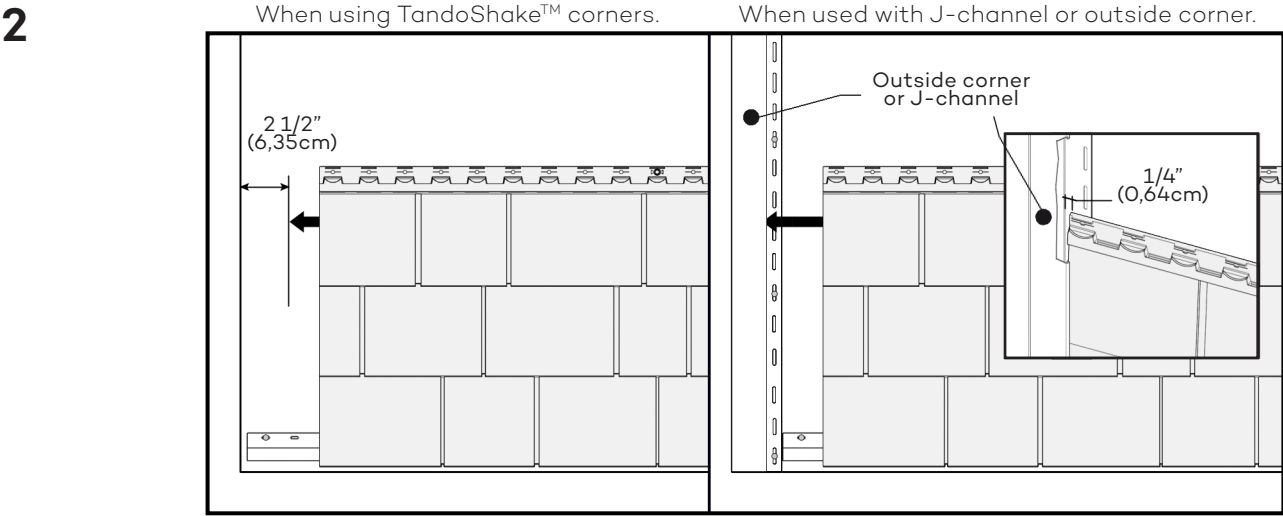
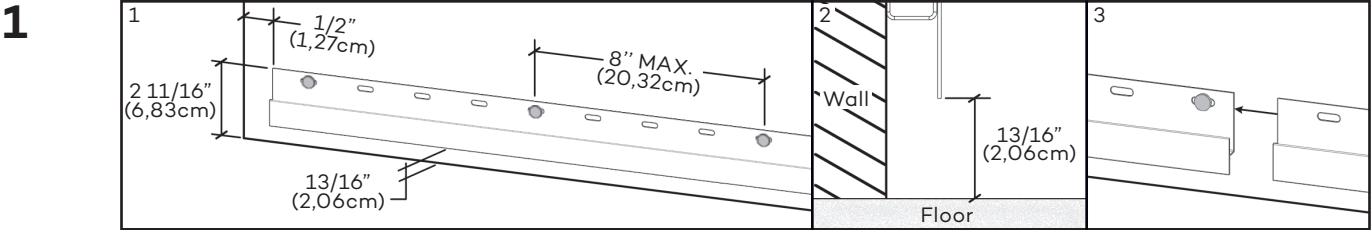
FRANÇAIS  
AU VERSO

ESPAÑOL

PORTUGUÊS

РУССКИЙ

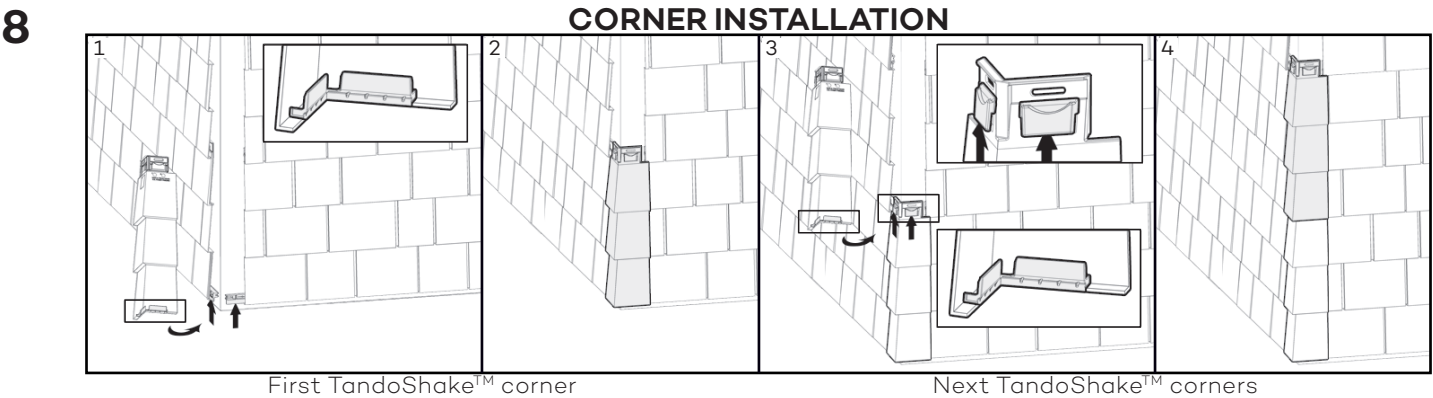
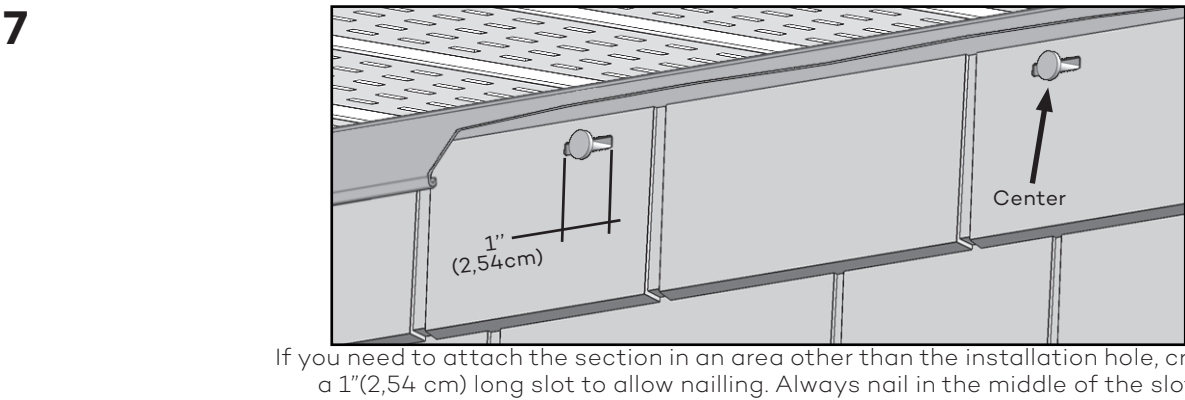
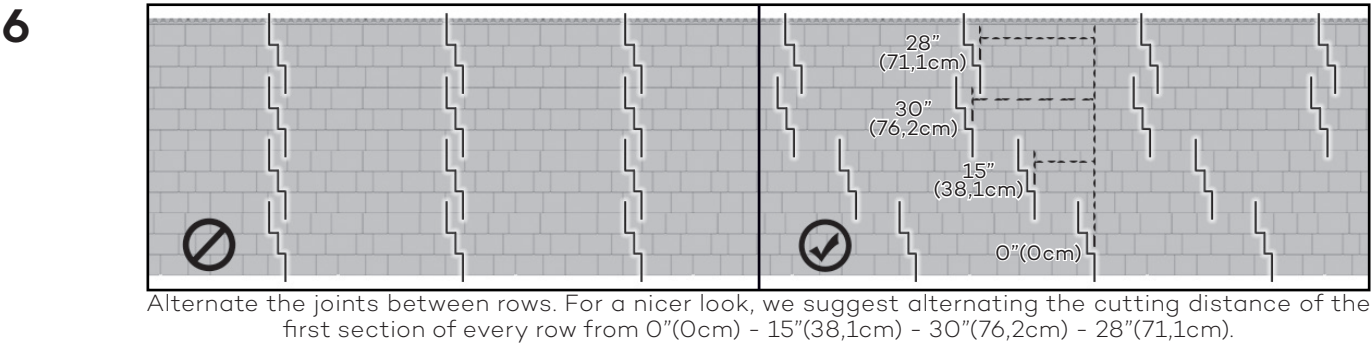
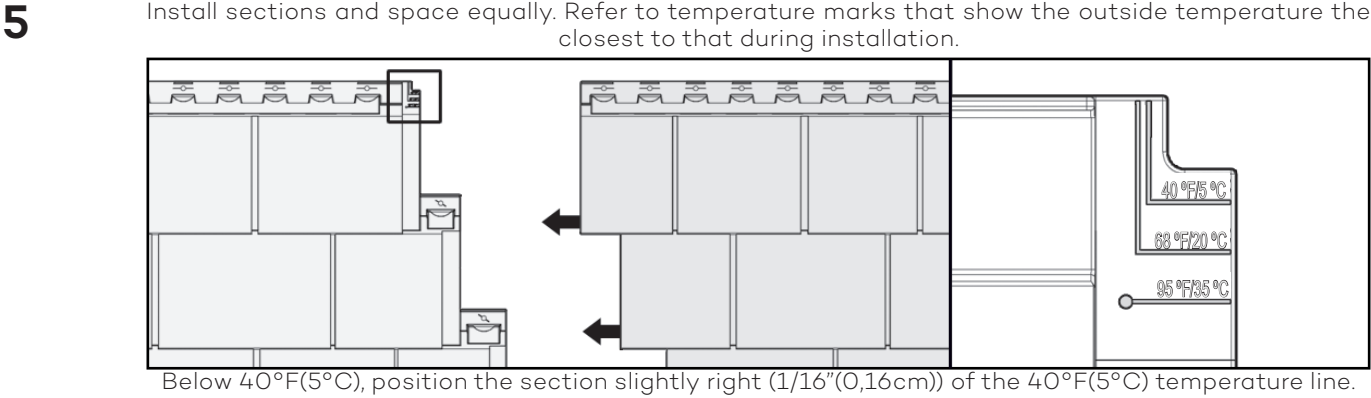
POLSKIE



When installing a full section, nail in the center hole first. When installing a cut section, nail in its center. For each nail, leave a gap between nail head and section. When using a roofing nailer, adjust its tip at the highest position and the air pressure according to the substrate in order to leave the required gap.

\* Roofing nailer as Bostitch RN46 and Hitachi NV45.

**Note:** For use in Miami-Dade and Florida High Velocity Hurricane Zones, please refer to installation instructions on Miami-Dade Approved Product Listing, available on our Tando website Resources page.



First TandoShake™ corner Next TandoShake™ corners

See TANDOSHAKE.COM for  
the complete installation guide.

