

HAND SPLIT SHAKE
SUMMARY INSTALLATION GUIDE



CAUTION: ALWAYS INSTALL PRODUCT FROM LEFT TO RIGHT AND REMEMBER THAT POLYMER UNDERGOES EXPANSION/CONTRACTION DUE TO TEMPERATURE VARIATIONS. FOR A BETTER LOOK WE RECOMMAND TO INSTALL PRODUCT ON FLAT SURFACES (EX: PLYWOOD PANELS OR OSB PANELS). IF SECTIONS ARE INSTALLED ON A WALL WITH FURRINGS, FURRING STRIPS MUST BE INSTALLED OBLIQUELY AND SPACED BY 8”(20,32CM).

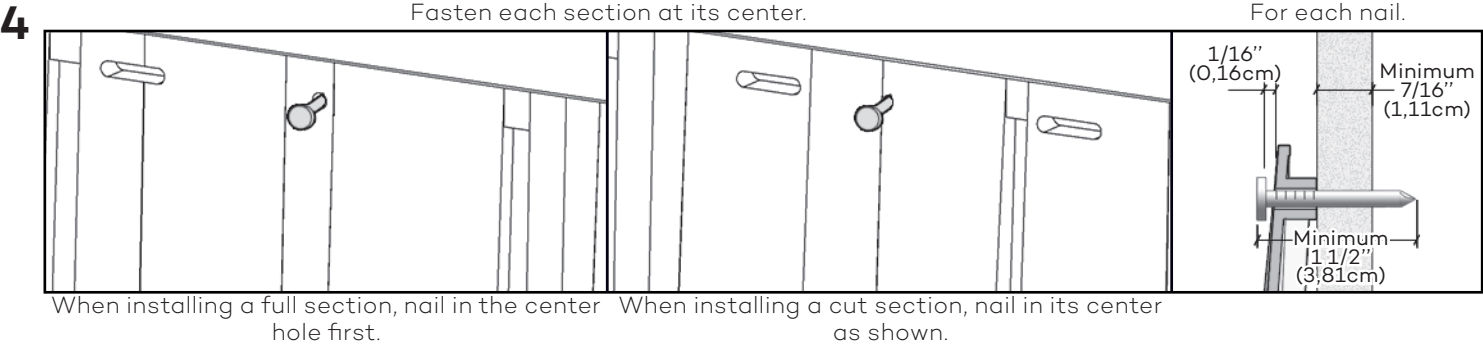
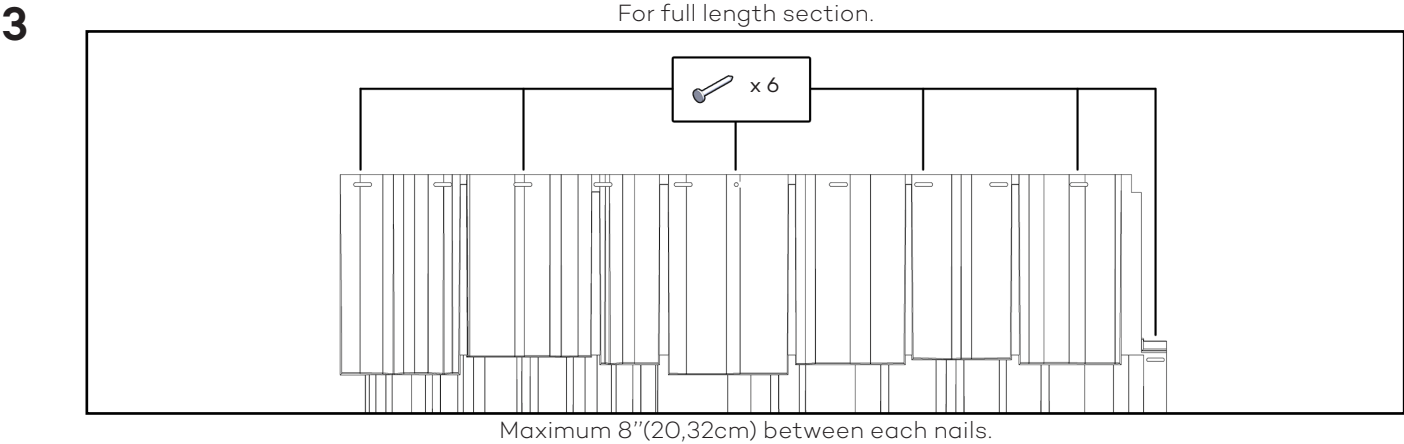
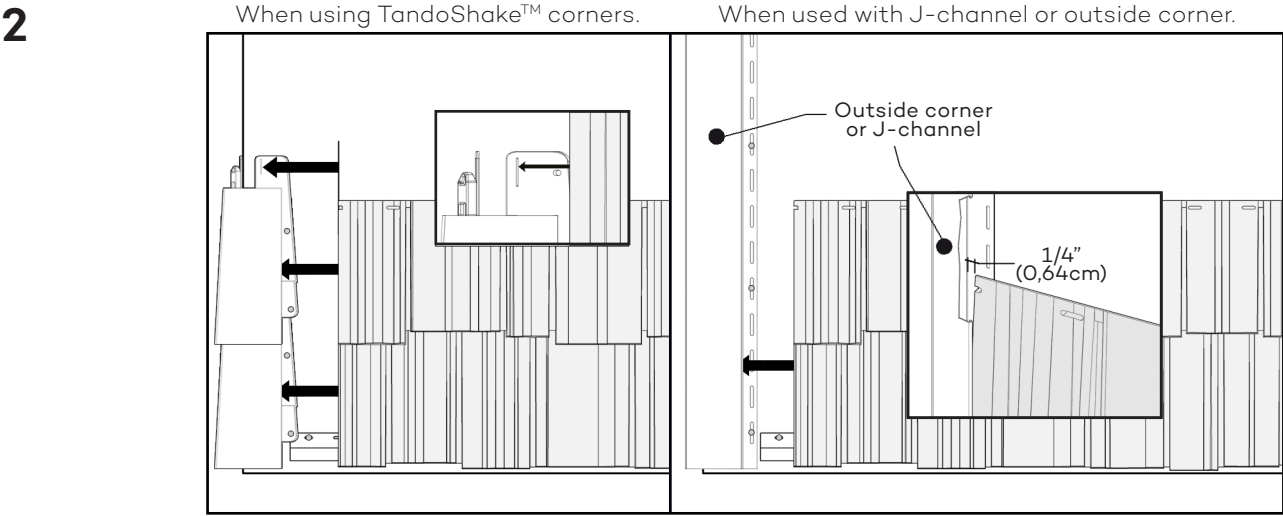
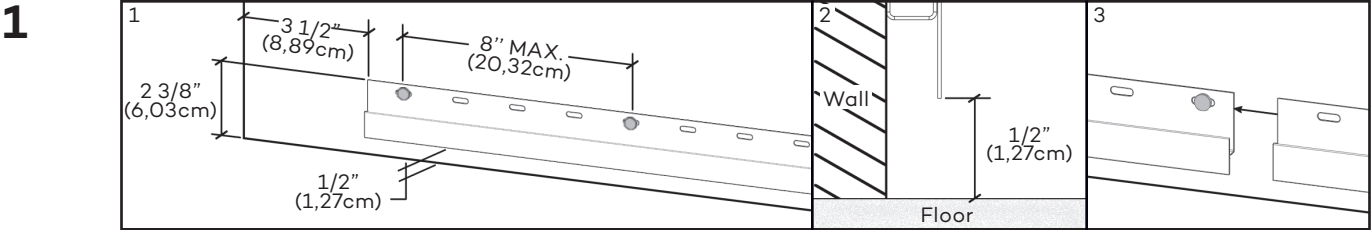
FRANÇAIS
AU VERSO

ESPAÑOL

PORTUGUÊS

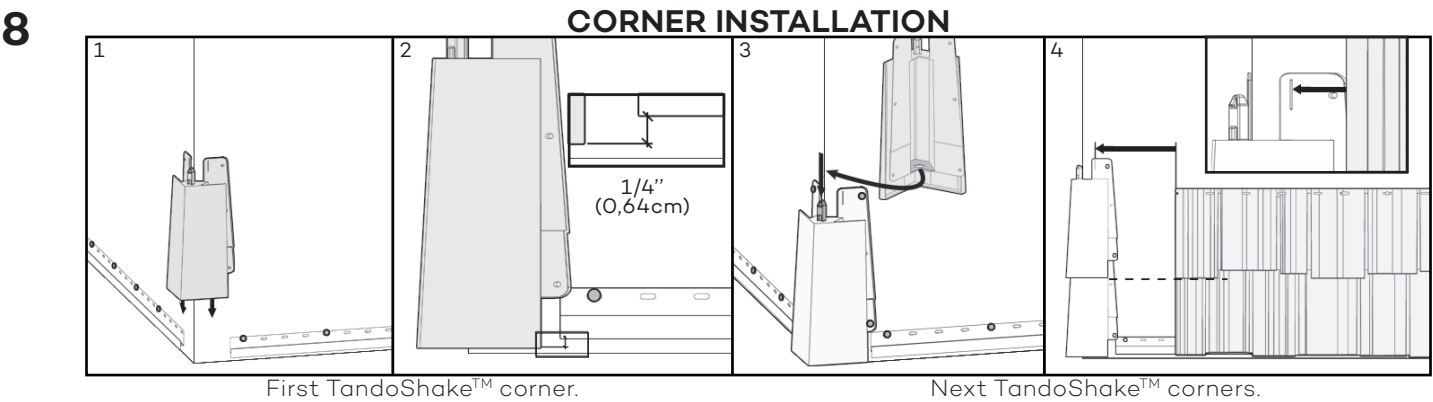
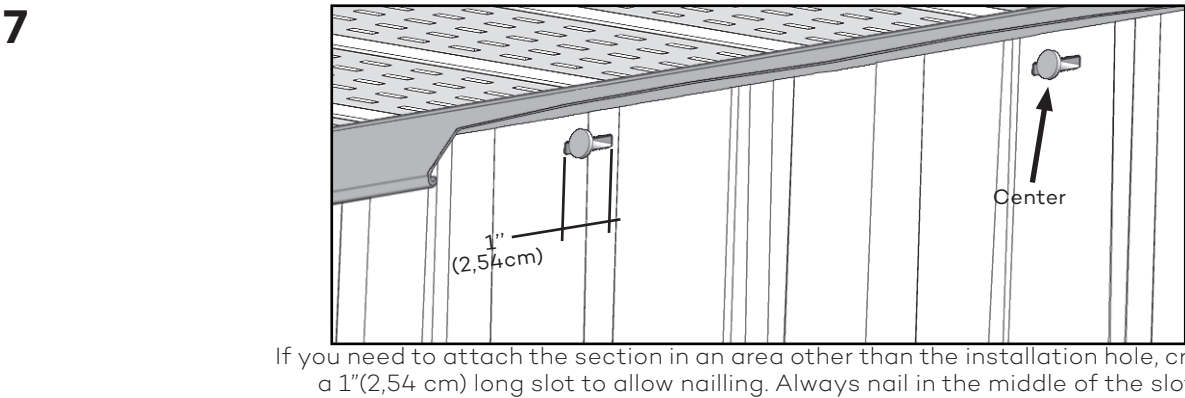
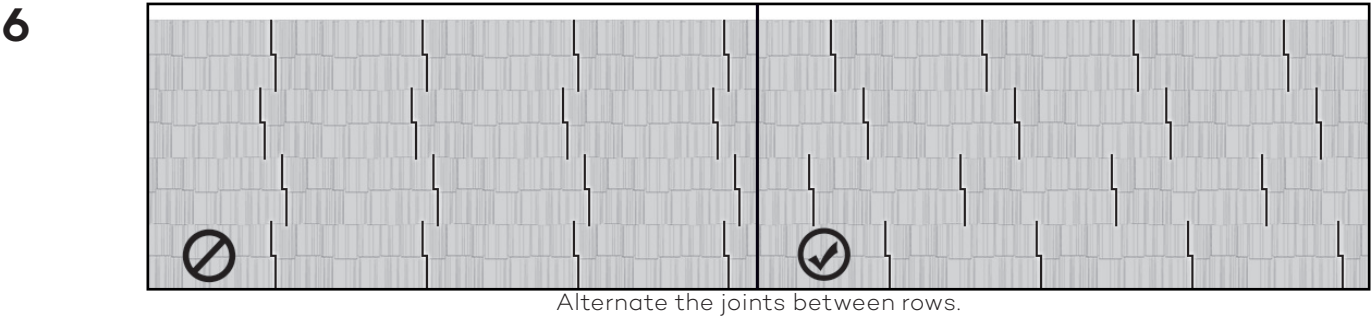
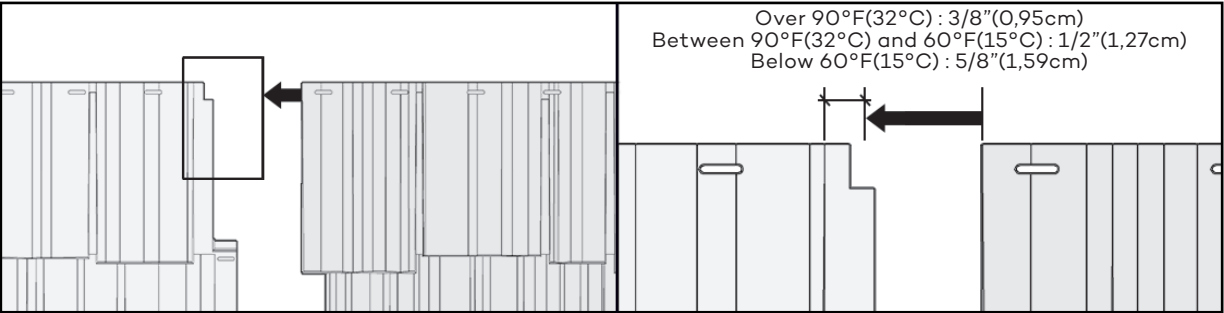
РУССКИЙ

POLSKIE



5

Install sections and space equally according to the outside temperature when installing and the temperature chart below.



See TANDOSHAKE.COM for
the complete installation guide.

